



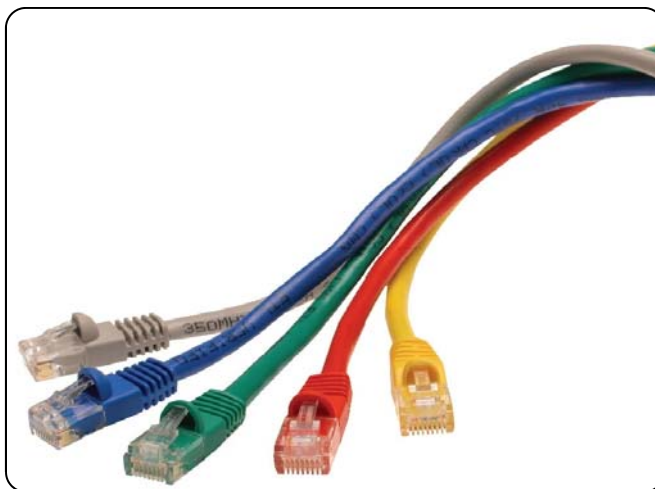
Your Link To... ...The World of Network Connectivity



Flush Bump Style



No Boot Style



Standard Colors

Category 5e and Category 6 Patch Cables - Stranded, Molded, Snagless

Snagless design facilitates easy removal from cabling bundles in wiring closets and data centers

- Injection molded boots for Category 5e / 6 bend radius requirements and sealing of the plug/cable interface
- "Flush" mold design allows booted patch cables to be installed side-by-side in high-density patch fields
- "Bump" style boot prevents clip from snagging
- 50µ short body plugs allow for minimal "de-twisting" of the cable pairs during manufacturing
- Staggered plug design increases overall performance (CAT 6 only)
- 24 AWG stranded construction for maximum flexibility
- Compliant with EIA/TIA specifications
- Non-booted style also available
- Lifetime warranty
- UL and cUL Listed

Category 5e and Category 6 Patch Cable Ordering Information

Rev 03-23-2017

Base Part No.	Style	Standard Colors and Lengths
<i>CAT 5e Patch Cables</i>		
10-54XX-00-YY	Flush Bump	Color (XX): 70=Grey, 71=Black, 72=Blue, 73=Green, 74=Red, 75=Yellow, 76=Orange, 77=Pink, 78=Purple, 79=White
10-54XX-03-YY	Non-Booted	
<i>CAT 6 Patch Cables</i>		
10-50XX-00-YY	Flush Bump	Length (YY): 01=1FT, 02=2FT, 03=3FT, 04=4FT, 05=5FT, 06=6FT, 07=7FT, 10=10FT, 14=14FT, 15=15FT, 20=20FT, 25=25FT, 50=50FT, 75=75FT, 100=100FT
10-50XX-03-YY	Non-Booted	

Related Products and Services:	• Labeling	• Special Packaging
	• Serialization	• Custom Lengths
	• Bundling	• Plenum Rated Assemblies